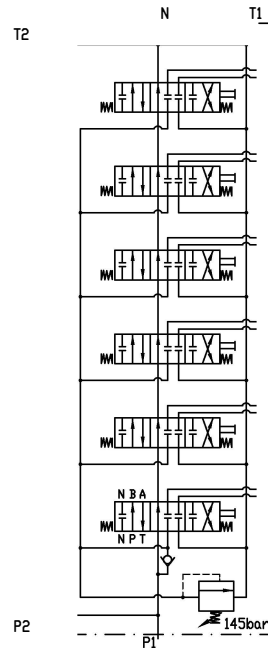


Scheme



Nominal flow – 40 l/min  
 Max. pressure – P=250bar; A,B=300bar; T=50bar  
 Pressure control valve setting range – 5...250bar  
 Spool working stroke – ±6 mm  
 Spool leakage at p=120bar, t=40°C and viscosity 46cSt – max 8cm<sup>3</sup>/min

Valve body – Zinc plated, Cr(VI)-free  
 Weight – 10.4 kg

Port threads:  
 P1, P2, T1, T2, N – G1/2  
 A, B – G3/8