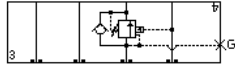
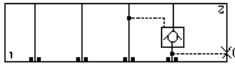


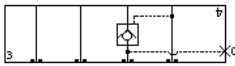
Counterbalance, On A, Pilot from B



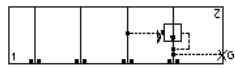
Counterbalance, On B, Pilot from A



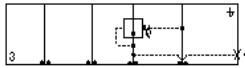
Pilot Operated Check, On A Pilot from B



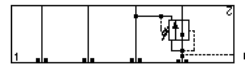
Pilot Operated Check, On B Pilot from A



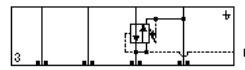
Reducing, On A drain to B



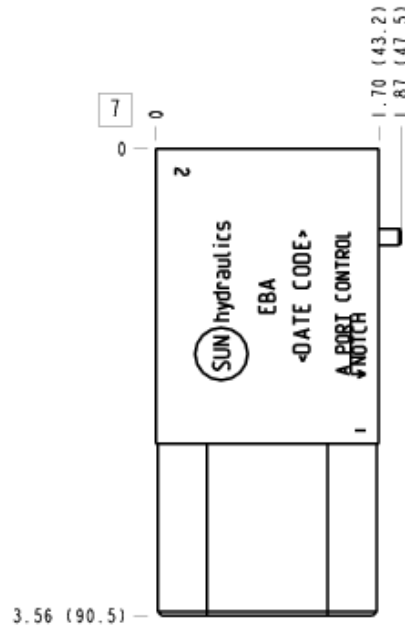
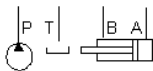
Reducing, On B drain to A



Reducing/Relieving, On A tank to B



Reducing/Relieving, On B tank to A



TECHNICAL DATA

Body Type	Sandwich
Interface	ISO 03
Body Features	On A or B, port 3 to opposite side
Stack Height	44,5 mm
Seal Plate Included (see notes)	Yes
Open Cavities	1
Cavity	T-11A
Port Size	1/4" NPTF
Model Weight	0.38 kg.

NOTES

- Stack height value in technical data table includes seal retainer plate.
- Customer to install locating pin according to functional orientation required.
- **Important:** Carefully consider the maximum system pressure. The pressure rating of the manifold is dependent on the manifold material, with the port type/size a secondary consideration. Manifolds constructed of aluminum are not rated for pressures higher than 3000 psi (210 bar), regardless of the port type/size specified.

PORT DESIGNATORS

Modifiers	Ports
EBA, /10, /11, /15, /16, /S, /S3, /N, /Y, /Y3	Gage Port (Plugged): 1/4" NPTF;
EBA/1A, /1B, /1F, /1G, /M, /T, /T3, /W, /W3, /Z	Gage Port (Plugged): 1/4" BSPP;

INCLUDED COMPONENTS

Part	Description	Quantity
340-003	Pipe Plug	1
500-001-012	O-Ring	4
700-002	Seal Plate	1
811-001-006	Pin	1
850-004-250	Plug	1

CONFIGURATION OPTIONS

Model Code Example: EBA

MODIFIER

6061-T651 Aluminum, Buna-N

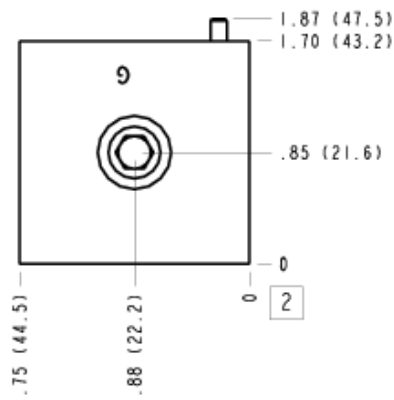
- /11** 6061-T651 Aluminum, Buna-N, Clear Anodize - Per MIL SPEC 8625F Type II, Class I
- /10** 6061-T651 Aluminum, Buna-N, Black Anodize - Per MIL SPEC 8625F Type II, Class II
- /N** 6061-T651 Aluminum, Viton
- /16** 6061-T651 Aluminum, Viton, Clear Anodize - Per MIL SPEC 8625F Type II, Class I
- /15** 6061-T651 Aluminum, Viton, Black Anodize - Per MIL SPEC 8625F Type II, Class II
- /M** 6061-T651 Aluminum, Metric, Buna-N
- /1B** 6061-T651 Aluminum, Metric, Buna-N, Clear Anodize - Per MIL SPEC 8625F Type II, Class I
- /1A** 6061-T651 Aluminum, Metric, Buna-N, Black Anodize - Per MIL SPEC 8625F Type II, Class II
- /Z** 6061-T651 Aluminum, Metric, Viton
- /1G** 6061-T651 Aluminum, Metric, Viton, Clear Anodize - Per MIL SPEC 8625F Type II, Class I
- /1F** 6061-T651 Aluminum, Metric, Viton, Black Anodize - Per MIL SPEC 8625F Type II, Class II
- /S** 65-45-12 Ductile Iron, Buna-N, Dewatering Oil
- /S4** 65-45-12 Ductile Iron, Buna-N, Chem. Black
- /S3** 65-45-12 Ductile Iron, Buna-N, Trivalent Clear Zinc with Top Sealer
- /Y** 65-45-12 Ductile Iron, Viton, Dewatering Oil
- /Y4** 65-45-12 Ductile Iron, Viton, Chem. Black
- /Y3** 65-45-12 Ductile Iron, Viton, Trivalent Clear Zinc with Top Sealer
- /T** 65-45-12 Ductile Iron, Metric, Buna-N, Dewatering Oil
- /T4** 65-45-12 Ductile Iron, Metric, Buna-N, Chem. Black
- /T3** 65-45-12 Ductile Iron, Metric, Buna-N, Trivalent Clear Zinc with Top Sealer
- /W** 65-45-12 Ductile Iron, Metric, Viton, Dewatering Oil
- /W4** 65-45-12 Ductile Iron, Metric, Viton, Chem. Black
- /W3** 65-45-12 Ductile Iron, Metric, Viton, Trivalent Clear Zinc with Top Sealer

MANIFOLD FACES

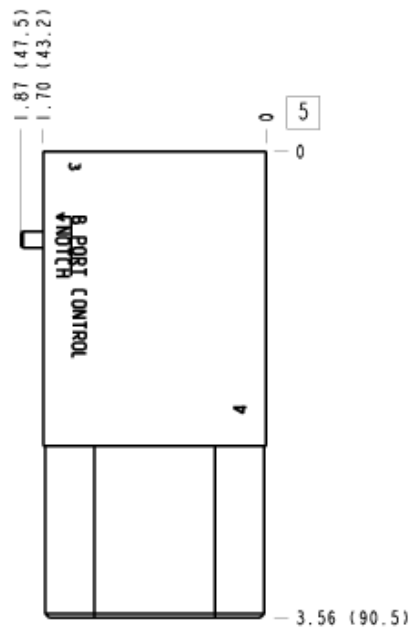
FACE GRID

1	2	3	4
5	6	7	8
9	10	11	12

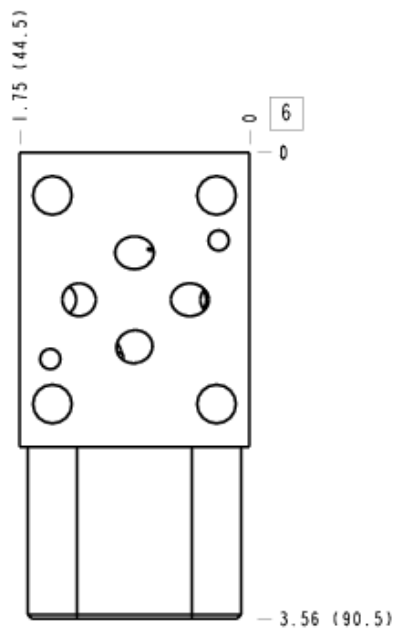
Face 2



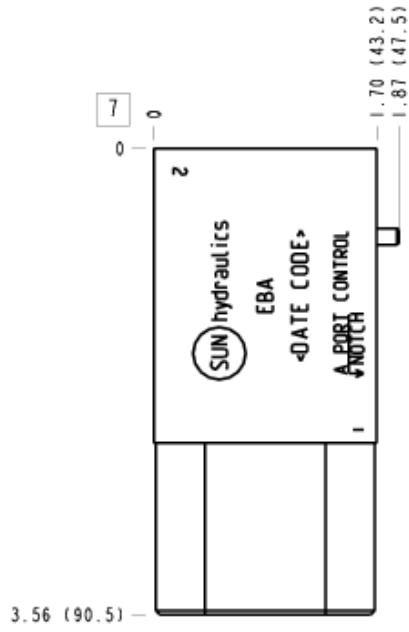
Face 5



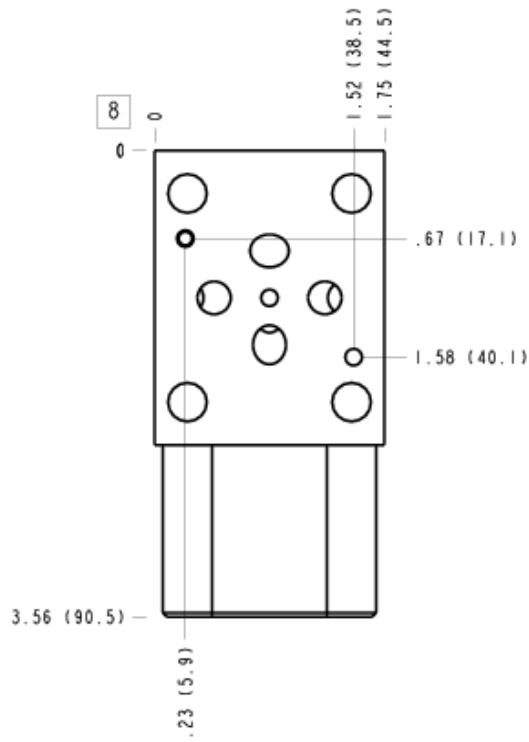
Face 6



Face 7



Face 8



Face 10

