

Milling Type Nozzles ST-49

With its 3 to 4 very strong concentrated forward jets and the sharp cutting edges the milling type nozzles will tear through almost any kind of blockage. The sharp edges cut, break and penetrate through every kind of blockage. Made out of wear-resistant, hardened stainless steel. All nozzles are equipped with replaceable hardened stainless steel rear and

centric front jets. Due to this feature the efficiency is considerably higher compared to those nozzles with drilled holes and the service life is several times longer. Max. 300 bar

Applications:

- » Penetration of completely clogged pipes
- » Opening of root masses
- » Opening of frozen pipelines
- » Hydraulic thrust boring flushing operations



300 bar. 1/4" F. \leftarrow 50 mm, \varnothing = 25 mm, \boxplus 0.13 kg. For tubes > 30 mm.

300 bar. 3/8" F. \leftarrow 55 mm, \varnothing = 28 mm, \boxplus 0.13 kg. For tubes > 50 mm.

Lateral front jets 0.5 mm drilled

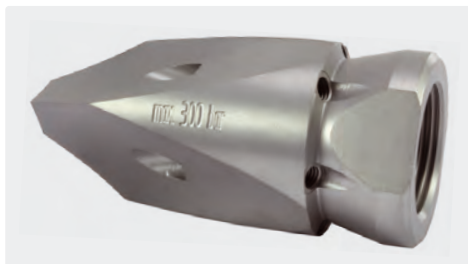
Lateral front jets with hardened stainless steel nozzle inserts

Functional principle



R+M Nr.	D	Front	\boxplus
649 010 234 045	045	3	4
649 010 234 050	050	3	4
649 010 234 055	055	3	4
649 010 244 060	060	4	4
649 010 244 070	070	4	4
649 010 244 080	080	4	4
649 010 244 085	085	4	4
649 010 244 100	100	4	4
649 010 244 120	120	4	4
649 010 244 150	150	4	4
649 010 244 200	200	4	4

R+M Nr.	D	Front	\boxplus
649 010 336 055	055	3	6
649 010 346 070	070	4	6
649 010 346 080	080	4	6
649 010 346 100	100	4	6
649 010 346 120	120	4	6
649 010 346 150	150	4	6
649 010 346 200	200	4	6
649 010 346 250	250	4	6
649 010 346 270	270	4	6



300 bar. 1/2" F. \leftarrow 68 mm, \varnothing = 31 mm, \boxplus 0.17 kg. For tubes > 60 mm.

300 bar. 3/4" F. \leftarrow 80 mm, \varnothing = 38 mm, \boxplus 0.29 kg. For tubes > 60 mm.

300 bar. 1" F. \leftarrow 100 mm, \varnothing = 50 mm, \boxplus 0.64 kg. For tubes > 100 mm.

Lateral front jets with hardened stainless steel nozzle inserts

Lateral front jets with hardened stainless steel nozzle inserts

Lateral front jets with hardened stainless steel nozzle inserts

R+M Nr.	D	Front	\boxplus
649 010 446 100	100	4	6
649 010 446 120	120	4	6
649 010 446 150	150	4	6
649 010 446 200	200	4	6
649 010 446 250	250	4	6
649 010 446 270	270	4	6
649 010 446 310	310	4	6
649 010 446 495	495	4	6
649 010 446 580	580	4	6

R+M Nr.	D	Front	\boxplus
649 010 546 120	120	4	6
649 010 546 150	150	4	6
649 010 546 180	180	4	6
649 010 546 200	200	4	6
649 010 546 250	250	4	6
649 010 546 270	270	4	6
649 010 546 310	310	4	6
649 010 546 450	450	4	6
649 010 546 495	495	4	6

R+M Nr.	D	Front	\boxplus
649 010 549 120	120	4	9
649 010 549 150	150	4	9
649 010 549 180	180	4	9
649 010 549 200	200	4	9
649 010 549 265	265	4	9
649 010 549 285	285	4	9
649 010 549 345	345	4	9
649 010 549 445	445	4	9
649 010 549 545	545	4	9

Symbols \square nozzle \odot inlet \varnothing diameter \leftarrow length mm \boxplus weight \boxplus rear jets \square pipe