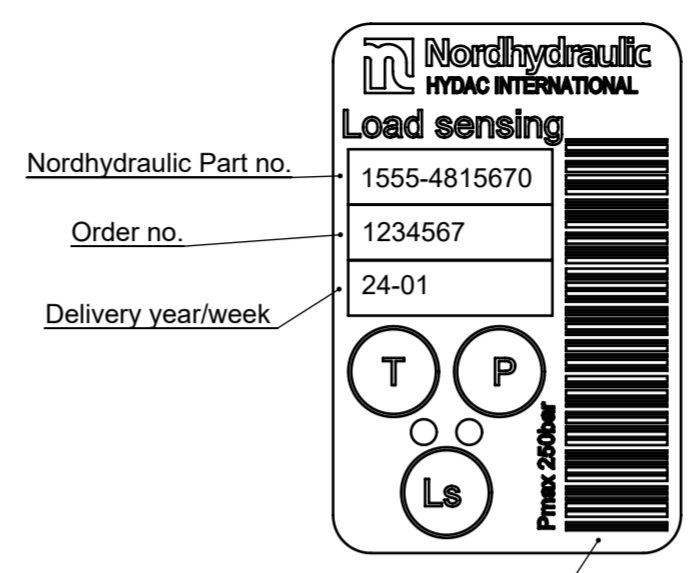
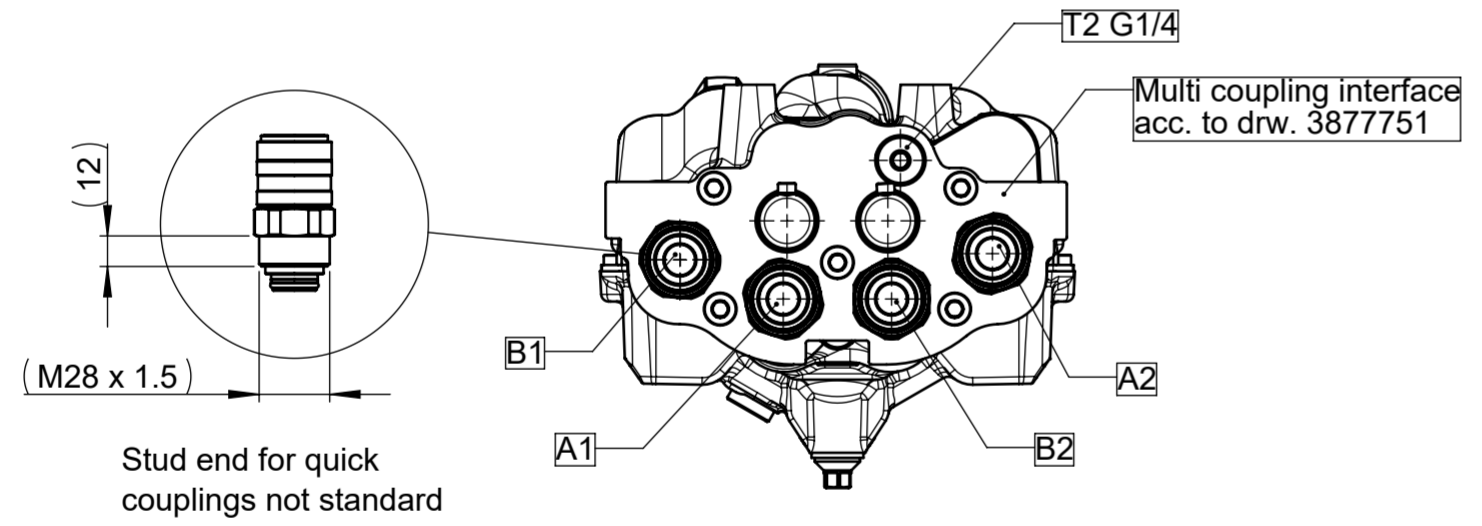


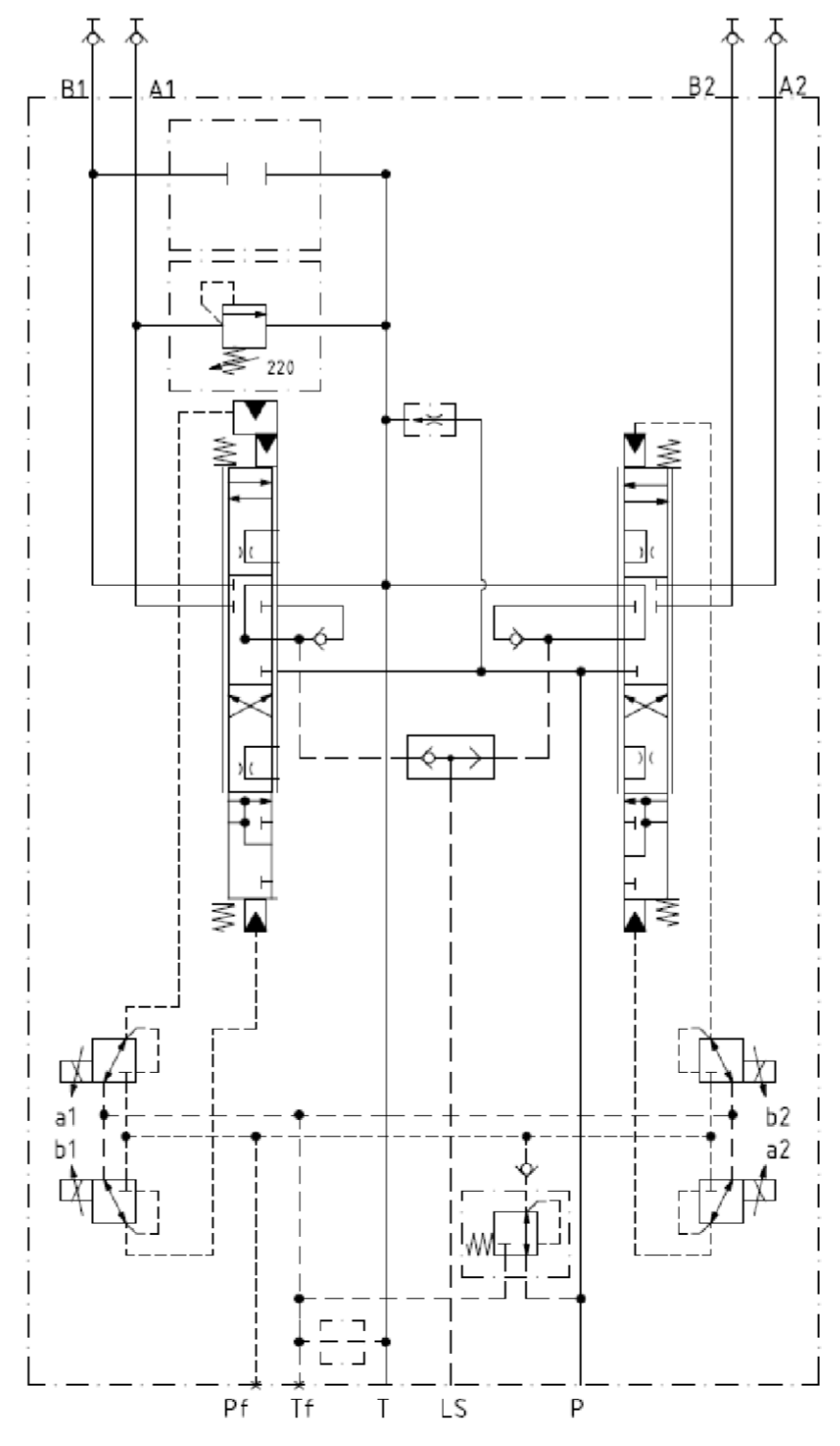
Label Description (example)



Barcode Includes NH part no. (Not the first four digits) and Order no.

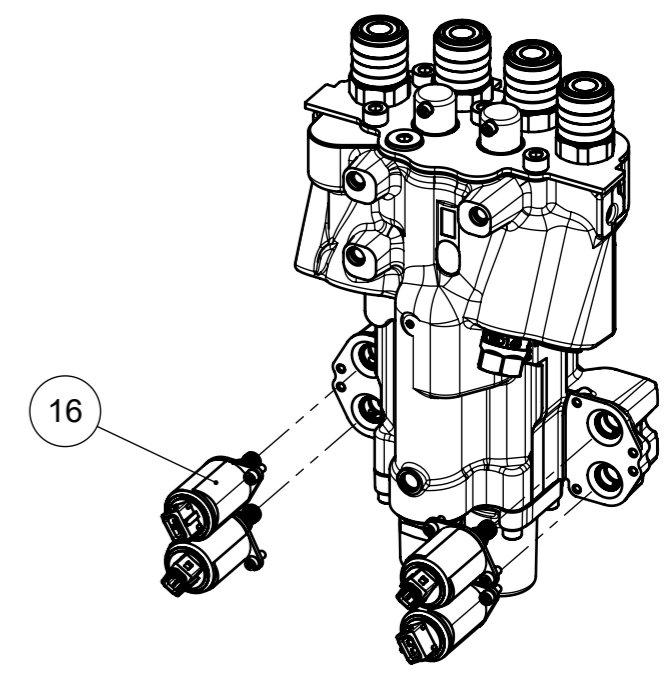
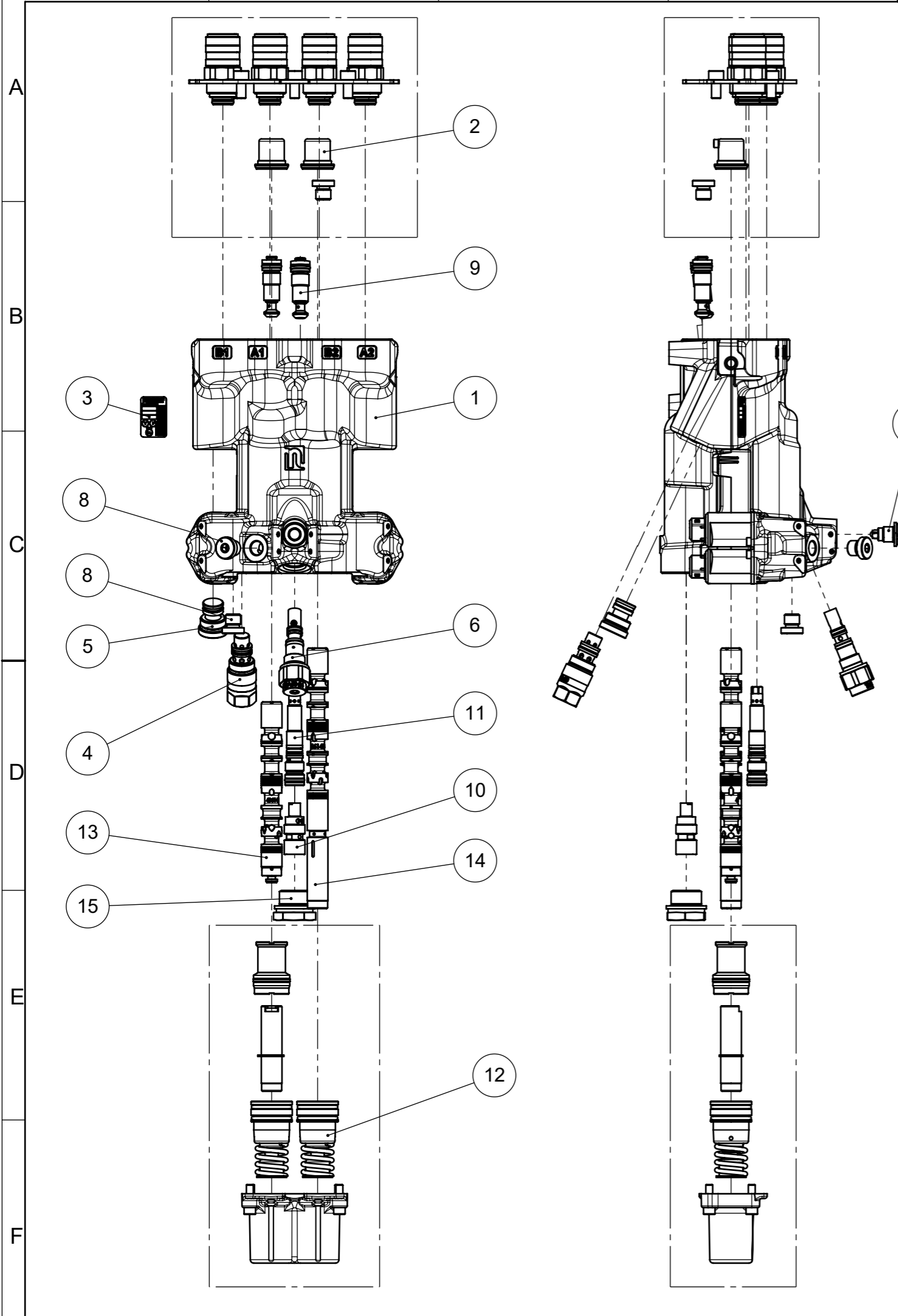


Stud end for quick couplings not standard



Pressure:		QC
Max operating pressure per port:		
P, LS:	250bar	
A/B:	250bar	
T:	20bar	
Tf, pilot tank:	20bar	
Pf, pilot pressure:	50bar	
Burst pressure P, LS, A/B:	800bar	
Flows:		
Pin:	Nom. 50l/min, Max 110l/min	
P-B1:	Min 60 l/min @ 20bar Δp	
P-A1:	Min 90 l/min @ 20bar Δp	
P-B2:	Min 50 l/min @ 20bar Δp	
P-A2:	Min 50 l/min @ 20bar Δp	
Leakage at 100bar, 40°C and 32cSt :		
A1/B2:	<4cm ³ /min without service port valve	X
	<5cm ³ /min with port relief valve	X
Pressure drop:		
B1-T:	7 bar@50lpm	
A1-T:	11 bar@50lpm	
B2-T:	35 bar@50lpm	
A2-T:	10 bar@50lpm	
Pressure relief:		
Secondary relief valve:	TBD 160 in port A1, 220bar @20l/min	
Pilot pressure:	Plug in B1	
System depending features Load Sensing		
LS:	Load signal from spools via shuttle valve, drained to T in neutral spool position.	X
	Different spools for Section 1 and 2	
	LS-valve has anti thermo chock functionality.	X
	Pressure drop in LS signal: max 3bar@3l/min.	
	(Pressure is max 3bar lower at 3l/min signal flow than in 0l/min)	
Further data:		
Recommended hydraulic fluid:	Mineral oil and synthetic oil based on mineral oil	
Hydraulic fluid temperature continuous operation:	-15°C - +80°C	
Hydraulic fluid viscosity continuous operation:	15-400cSt	
Contamination in hydraulic fluid acc. ISO4406:	20/17/14	
Spool Ø:	18mm	
Spool stroke +/- (float):	6/6 (+4mm) Float position in section 1 & 2	
Control current Start:	450mA	*
Control current Stop:	1000mA	*
Control current Float position:	1500mA	
Valve interface for tractor and loader:		
Mounting holes:	3x M8 c/c 75x46mm	
Electrical connector solenoid:	AMP junior power timer	
Port to connect accumulator for pilot pressure		
Port to connect separated tank line to pilot tank.		
Painting:	Black, RAL 9005	
Weight:	17 kg	
X Tested before delivery		
*) Currents needs to be tuned with the actual controller in the application.		

HYDAC ADA Version	Kanter Corners ISO13715	Allgemeintoleranzen für / General tolerances for Schweißkonstr. / welded struc. EN ISO 13920 - A	Generella toleranser / General tolerances SIZE ISO 14405 (E)
		Ytkvalitet Surface quality	Form- och lägetolerans / Toleransklass Geometrical tolerances / Tolerance class
		ISO 1302	Basmått / linear dimensions (mm)
			över / over t o m / to
			Material / Material
			Massa / Mass
		Ord.-/Utv.-Projekt nr / Ord.-Devel.-Project-No	17,000 KG
		Skala	Färdigmått / Finished size
nr / No	kontrollerad / Chkd. on	kontr. av / Chkd. by	Ä.M.nr / Notice of change No
Vers. / Vers.	ändrad / Modif. on	ändrad av / Modif. by	
Sida / Sheet of	Benämning / Description		Del / Part
1 / 2	RMS202 MK2 LS EH		000
Format / Size	Datum / Date	Namn / Name	
A2	18.04.2024	OSTERLA	
SW-Vers. 2022	SAP Ritrn. / Mat. nr. / SAP Draw. / Mat. No.		
	4815670		
	Art. nr. / Part No.		
	1555-4815670		
	NH Ritrn. nr. / NH Draw. No.		
	Ersätter / Exchange for		
	Ersatt av / Replaced by		



ITEM NO.	QTY.	PART NO.	SAP MTRL.NO.	DESCRIPTION
1	1	2230-4300919	4300919	RMS202 EH, LS, 2-chock, w. plugs, VL52
2	1	2230-4360761	4360761	Quick coupling set, QC02
3	1	8050-4513879	4513879	Lable RMS, L0002
4	1	2275-160338	3709420	TBD160-220
5	1	2310-210313	6900002233	P 400 PLUG
6	1	1505-210710	6900000049	TRA53-24 bar
7	1	2230-803321	6900011262	Check valve asm., PCV01
8	2	2310-800925	3494701	Plug G1/4", PG02
9	2	2230-802588	6900011208	Check valve asm., MB01
10	1	2251-4280130	4280130	Shuttle asm., SV01
11	1	2230-4332729	4332729	Heating cartridge, HC1
12	1	2165-4361950	4361950	Spool control asm., SCE11
13	1	2118-4361407	4361407	Spool , SL053
14	1	2118-4361414	4361414	Spool, SL054
15	1	2230-9513965	6900007879	RG241 REDUSERNIP.G3/4"-G1/4"
16	4	2230-4744973	4744973	ER1225AH

HYDAC ADA Version		Kanter Corners ISO13715		Allgmeintoleranzen für / General tolerances for Schweißkonstr./ welded struc. EN ISO 13920 - A	Generella toleranser / General tolerances ISO 2768 - v SIZE ISO 14405 (E)																								
		Ytkvalitet Surface quality	ISO 1302	Form- och lägetolerans / Toleransklass	Geometrical tolerances / Tolerance class (H)																								
				Basmått / linear dimensions (mm)																									
				<table border="1"> <tr> <td>över / over</td> <td>3</td> <td>6</td> <td>30</td> <td>120</td> <td>400</td> <td>1000</td> <td>2000</td> </tr> <tr> <td>t o m / to</td> <td>6</td> <td>30</td> <td>120</td> <td>400</td> <td>1000</td> <td>2000</td> <td>4000</td> </tr> <tr> <td></td> <td>±0,5</td> <td>±1</td> <td>±1,5</td> <td>±2,5</td> <td>±4</td> <td>±6</td> <td>±8</td> </tr> </table>	över / over	3	6	30	120	400	1000	2000	t o m / to	6	30	120	400	1000	2000	4000		±0,5	±1	±1,5	±2,5	±4	±6	±8	
över / over	3	6	30	120	400	1000	2000																						
t o m / to	6	30	120	400	1000	2000	4000																						
	±0,5	±1	±1,5	±2,5	±4	±6	±8																						
				Material / Material	Massa / Mass																								
				17,000 KG																									
				Skala	Färdigmått / Finished size																								
				1:4																									
nr No	kontrollerad Chkd. on	kontr. av Chkd. by	Ä.M.nr Notice of change No	Del / Part 000	Datum / Date	Namn / Name																							
Vers.	ändrad Modif. on	ändrad av Modif. by		ritad / Drawn	18.04.2024	OSTERLA																							
Vers.				kontr. / Chkd.																									
Sida Sheet of	Benämning / Description					SAP Ritn. / Mat. nr.																							
2 / 2	RMS202 MK2 LS EH					SAP Draw. / Mat. No. 4815670																							
Format/Size						Art. nr. / Part No. 1555-4815670																							
A3						NH Ritn nr. / NH Draw. No.																							
SW-Vers.						Ersätter/Exchange for																							
2022						Ersatt av / Replaced by																							