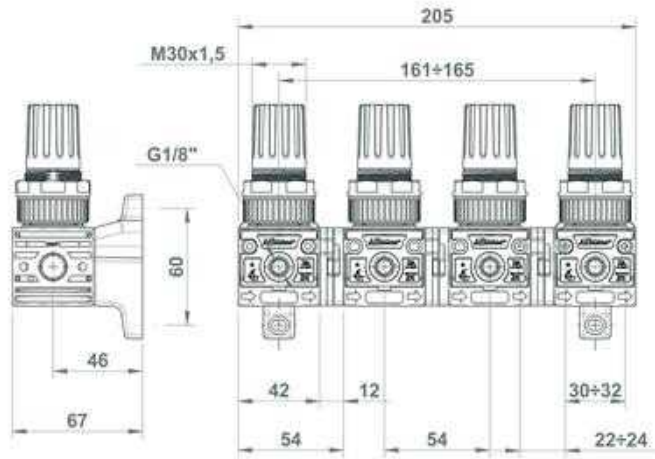
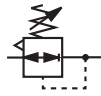


# LINE 042 1/4" | REGULATORS FOR BATTERY



## GENERAL FEATURES

Modular regulator for BATTERY assembling, with common inlet and regulated pressure on the front connections.  
 Constant supply for all regulators and independent regulation pressure for each port.  
 Relieving for a quick exhaust of downstream overpressure.  
 Knob with locking pressure device.  
 Equipped with nut and nr. 1 plug.

## GENERAL TECHNICAL DATA

<b>Pressure range</b>	0-2; 0-4; 0-8; 0-12 Bar
<b>Maximum inlet pressure</b>	16 Bar
<b>Reference flow rate (P1= 6,3 bar ΔP= 1 bar)</b>	600 NI/min
<b>Working temperature (a 10 bar)</b>	-5 / +50°C*
<b>INLET-OUTLET connections</b>	G1/4"
<b>Regulated pressure connections</b>	G1/8"
<b>Max Torque G1/4" IN-OUT</b>	25 Nm
<b>Max torque gauge port round</b>	1 Nm
<b>Weight</b>	0,125 kg

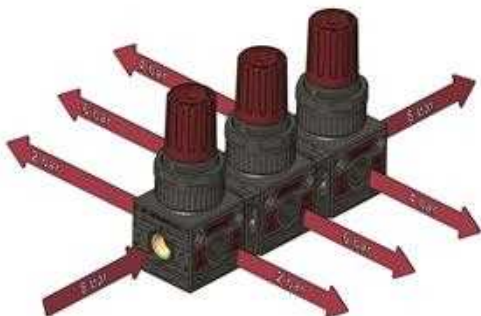
Below 3°C the air of the circuit must be free from humidity

## ORDERING CODE

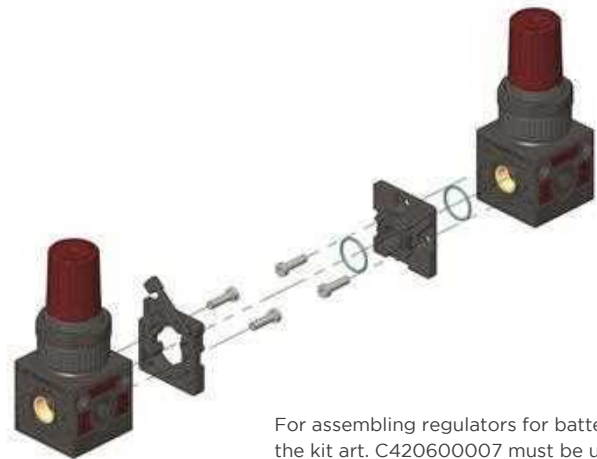
CODE	REF.
042.01.00045	R 1/4" 042 02 R B
042.01.00046	R 1/4" 042 04 R B
042.01.00047	R 1/4" 042 08 R B
042.01.00048	R 1/4" 042 12 R B

For the non-relieving models please go to Water preparation section.

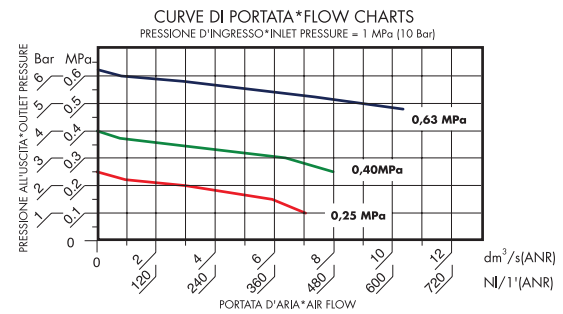
Please note: the regulator for battery is not suitable for the COMPACT gauge. The round gauge must be used.



Assembling scheme



For assembling regulators for battery, the kit art. C420600007 must be used.



## GUIDE TO REFERENCES

R 1/4" 042 08 R LK

Product <b>R</b> = Regulator	Special type <b>LK</b> = Lockable
Connection <b>1/4"</b> = G 1/4" <b>3/8"</b> = G 3/8" <b>1/2"</b> = G 1/2" <b>3/4"</b> = G 3/4" <b>1"</b> = G 1"	Version = Standard <b>B</b> = For battery
Line <b>042</b> <b>050</b> <b>052</b> <b>075</b> <b>080</b> <b>095</b>	Version <b>R</b> = Relieving
	Range of pressure <b>04</b> = 0 - 4 Bar <b>08</b> = 0 - 8 Bar <b>12</b> = 0 - 12 Bar

AIR PREPARATION

VALVES

CYLINDERS

FITTINGS

WATER PREPARATION